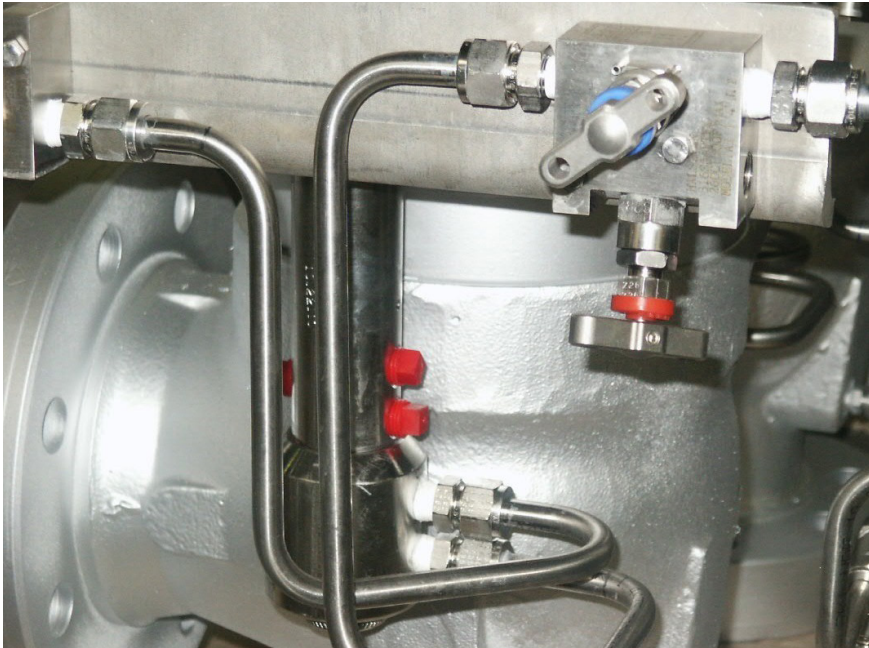


## 78 series

API pilot operated pressure relief valve



### ASME B&PVC Section VIII certified

The 78 series is a versatile pilot operated pressure relief valve. It is used in the oil & gas industries (upstream, midstream and downstream), petrochemical and chemical.

The 78 series valve can either discharge gas, vapour, liquid, flashing liquid, steam, and dual phase.

### 78 series – Semi nozzle POPRV

The 78 series pilot operated pressure relief valve is API STD 526 compliant. It meets the requirements of the ASME B&PV Code Section VIII.

The valve can include an option for remote control (for lift assistance and control).

The non-flowing pilot has separate sensing and feeding entries (the sensing area elastomers are protected due to the pressure remaining static).

The valve has a soft seat. The leakage risk in between and the disc and the seat is minimised. The selection of the elastomer is based on the customer fluid details. All elastomer types can be selected (from the standard di-polymer FKM to high chemical resistant FFKM). On application, a metal seat can be supplied even if it would be recommended in this case to select our 76 series.

The dimensions in between the flanges are compliant with the API STD 526.

### Features

- ASME BPVC Section VIII certified
- Pop and modulating pilot
- Standard dimensions (API Std 526)
- Semi nozzle
- Metal or soft seat
- Repeatable set pressure
- Hinged disc

### Applications

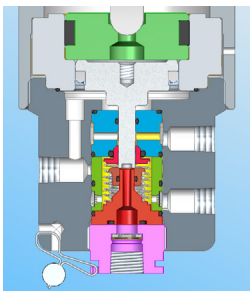
- All heavy duty processes
- Crude oil, vapour, gas
- Dual phase
- Hot water, steam lines

### Availability

- Body casting from the Trillium foundry in from one of the main European foundries (Portugal, France) based on the customer specifications.
- Valve produced and tested in France.

# 78 series

API pilot operated pressure relief valve



Top : Set of 78 series and DCS pilot  
Middle : DCS pilot internals  
Bottom : Cut-away 78 series

## Features

	VALUE
Pressure Class	<b>Class:</b> 150 to 2500
Body material	Low and high alloy steels, non ferrous steels (e.g. WCC/LCC/WC6/WC9/CF8M/Duplex/Alloy625/ Alloy C276)
Inlet size	1" to 8"
Orifice	D to T
Operating Temperature (Continuous use)	Up to 345°C
Tightness	<b>% of Set P:</b> 95
Max. Expected Operating Pressure	<b>% of Set P:</b> 95
Certified overpressure	<b>% of Set P:</b> 10(ASME VIII)

## Certifications (French plant and products)

ASME Boiler & Pressure Vessel Code Section VIII (UV stamp)

PED 2014/68/UE (CE marking)

ATEX 94/9/EC

ISO 9001 - ISO 14001 - OHSAS 18001

SELO TS (Chinese permit of use)

TSSA / CRN (Canadian permit of use)

EAC TR CU 010 - EAC TR CU 012 - EAC TR CU 032 (Eurasian Economic Union)

Trillium Flow Technologies France SAS  
Rue Jean-Baptiste Grison  
ZI du bois Rigault  
62880 Vendin le vieil  
France

Tel: +33 (0)3 21 79 54 50  
Fax: +33 (0)3 21 28 62 00  
E-Mail: Sales.sarasinrsbd@trilliumflow.com